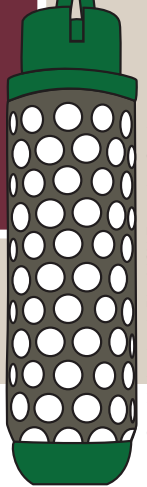


# IRRIGATOR WATERMARK SERIES: Construction Guide



Graphic by Jacob Flix, MSU Extension Service

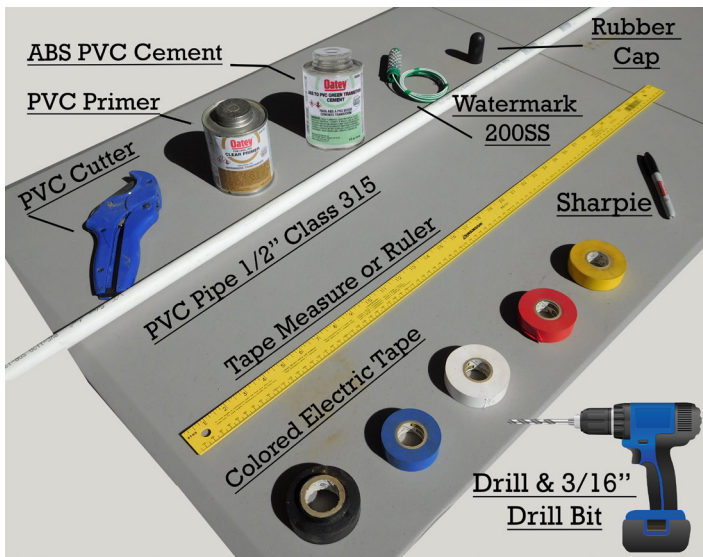
This publication series provides information and recommendations pertaining to the Irrigator Watermark 200SS, a granular matrix sensor commonly used in Mississippi for scheduling irrigation. Future publications will discuss other types of soil moisture sensors. Users should choose tools that best fit their needs.

## Introduction

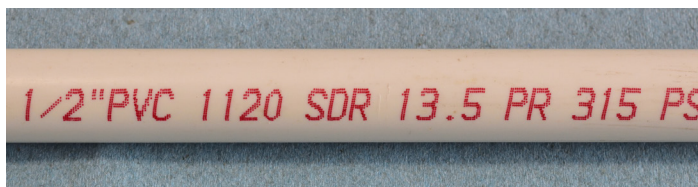
This publication provides a step-by-step guide to proper Watermark sensor construction. Following these steps will make the sensors easier to install at the intended depths and easier to remove at the end of the season.

## Preparation

The tools and supplies pictured below will be used. Fifteen feet of sensor wires is usually convenient.



One set of 6-inch, 12-inch, 24-inch, and 36-inch sensors will require one 10-foot stick of 1/2-inch Class 315 PVC pipe. Select the correct PVC specifications to avoid frustrations later.



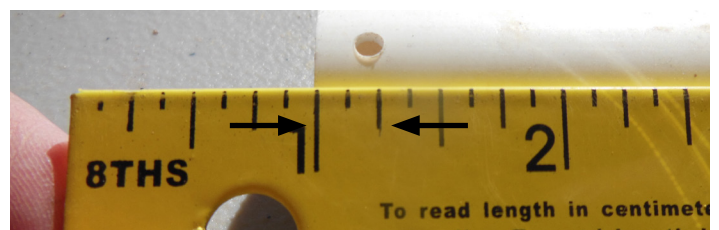
ABS-PVC transition cement is best for joining the ABS sensor collar to a primed PVC section. Using a different cement can increase the risk of sensor-PVC separation during removal.

## Assembly

**Step 1:** Using the PVC cutter, cut a PVC length that is 10 inches longer than the intended sensor depth to simplify sensor removal. Following the color code below for that sensor depth, wrap a ring of colored electrical tape 4 inches from one end of the cut PVC section.

Sensor depth	PVC length	Tape color
6"	16"	blue
12"	22"	white
24"	34"	red
36"	46"	yellow

**Step 2:** Using the electric drill and a 3/16-inch drill bit, make a weep hole 1/4 inch from the untaped bottom end of the PVC section.



**Step 3:** Apply PVC primer at least ½ inch inside the bottom end of the PVC section. Be ready for drips.



**Step 4:** After a few minutes of drying, thread the sensor wires from the bottom end of the PVC section to the top end until the sensor collar meets the bottom end. Bundle the extra wire.

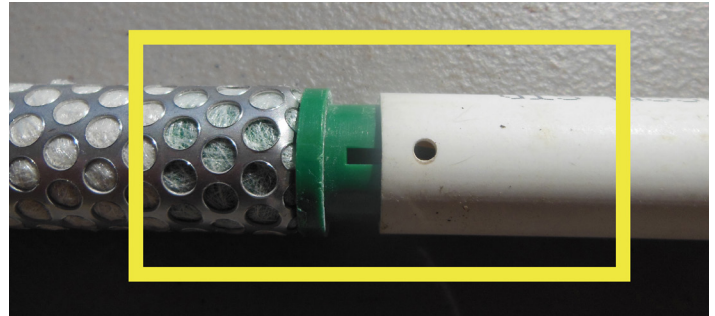


**Step 5:** Carefully apply an appropriate amount of ABS-PVC transition cement to the sensor collar.



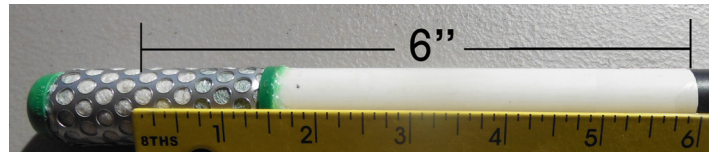
**Step 6:** While aligning the sensor weep slot with the drilled weep hole, push the sensor collar fully into the bottom end of the PVC section.

Ensure that the weep hole will allow water to drain out.

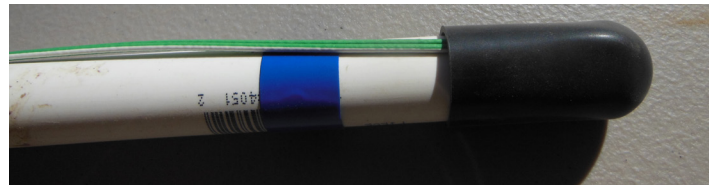


**Step 7:** Wrap a ring of black electrical tape so that the distance between the bottom of the tape and the middle of the attached sensor equals the intended sensor depth. After installation, the bottom edge of the black electrical tape should be flush with the ground.

Placing a rubber washer around the PVC section can reduce water flow down the installation hole.



**Step 8:** Slide a rubber cap onto the top end of the PVC section. The construction is now complete!



**For more information, please contact Extension Irrigation Specialist Drew Gholson at [drew.gholson@msstate.edu](mailto:drew.gholson@msstate.edu) or (662) 390-8505.**

*This publication is a contribution of the National Center for Alluvial Aquifer Research (NCAAR), the Mississippi State University Extension Service, and the Row-Crop Irrigation Science Extension and Research (RISER) initiative. NCAAR is supported by the Agricultural Research Service, United States Department of Agriculture, under Cooperative Agreement number 58-6001-7-001. RISER is supported jointly by the Mississippi Soybean Promotion Board, Mississippi Corn Promotion Board, Mississippi Rice Promotion Board, Cotton Incorporated, and Mississippi Peanut Promotion Board.*

The information given here is for educational purposes only. References to commercial products, trade names, or suppliers are made with the understanding that no endorsement is implied and that no discrimination against other products or suppliers is intended.

**Publication 3538 (12-20)**

By **Jacob Rix**, Extension/Research Associate; **Himmy Lo**, PhD, Assistant Extension/Research Professor; **Drew Gholson**, PhD, Assistant Professor; and **Mark Henry**, Extension Associate, Delta Research and Extension Center.

Copyright 2020 by Mississippi State University. All rights reserved. This publication may be copied and distributed without alteration for nonprofit educational purposes provided that credit is given to the Mississippi State University Extension Service.

Produced by Agricultural Communications.

Mississippi State University is an equal opportunity institution. Discrimination in university employment, programs, or activities based on race, color, ethnicity, sex, pregnancy, religion, national origin, disability, age, sexual orientation, genetic information, status as a U.S. veteran, or any other status protected by applicable law is prohibited. Questions about equal opportunity programs or compliance should be directed to the Office of Compliance and Integrity, 56 Morgan Avenue, P.O. 6044, Mississippi State, MS 39762, (662) 325-5839.

Extension Service of Mississippi State University, cooperating with U.S. Department of Agriculture. Published in furtherance of Acts of Congress, May 8 and June 30, 1914. GARY B. JACKSON, Director