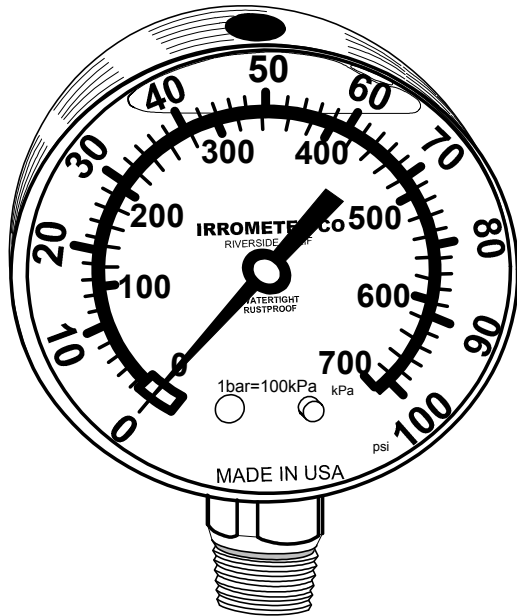


FOR IRROMETER  
TECHNICAL SUPPORT  
CALL (951) 689-1701



STAINLESS STEEL COVER  
LIQUID FILLED

THIS GAUGE PROVIDES  
SUPERIOR PERFORMANCE  
IN APPLICATIONS  
WHERE VIBRATION,  
PULSATION,  
MECHANICAL SHOCK AND  
PRESSURE SPIKES ARE  
COMMON.

AVAILABLE WITH FACTORY  
INSTALLED INTERNAL SNUBBER  
TO HELP ABSORB SURGES  
(SNUBBER IS REMOVEABLE  
FOR CLEANING)

— S

LIQUID FILLED 2 1/2" PRESSURE GAUGE  
PRESSURE RANGE(S):

- 0-60 PSI
- 0-100 PSI
- 0-200 PSI
- 0-400 PSI

ALL GAUGES ARE DUAL SCALE WITH PSI AND kPa.

ASME B40.1 GRADE B COMMERCIAL SERIES

1/4" NPT BRASS BOTTOM CONNECTION

INTERNAL COMPONENTS:

BRASS WITH NYLON GEAR AND PHOSPHORUS BRONZE BOURDON TUBE

304 STAINLESS STEEL CASE WITH BUNA-N VENT PLUG

POLYCARBONATE FACE

GLYCERIN FILLING (20-150°F AMBIENT)

Gauge 2

Irrometer Liquid Filled Pressure Gauge