

EFFECTIVE JANUARY 1, 2022 — All products made in U.S.A., except where † indicated. Supersedes all previous price lists. All product labeling and instructions printed in English except where indicated.

This catalog reflects standard models of instruments held in stock for expedited order fulfillment. Other models are available by special order.

IRROMETER® SOIL MOISTURE SENSORS

IRROMETER® measures soil water tension which indicates plant water availability. The white tipped **STANDARD (SR)** is for general use with row, tree, and field crops, with ranges from 0-100 cb (kPa). The blue tipped **LOW TENSION (LT)** is designed for use in very coarse soils and non-soil container media with ranges from 0-40 cb (kPa).

Both **SR and LT IRROMETER** gauges have a vent for better temperature and elevation related compensation, a large 2 1/2 inch face for ease of reading, and a stainless steel rustproof body.



STANDARD



LOW TENSION



MLT

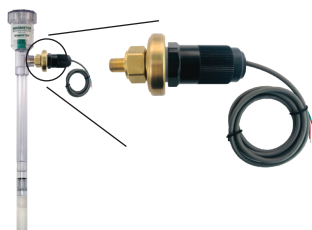
MINIATURE LOW TENSION IRROMETER® The compact size, quick-flo tip, and membrane vented gauge make it the best choice for small container applications. *See product specification sheet for details.*

MANUAL GAUGE



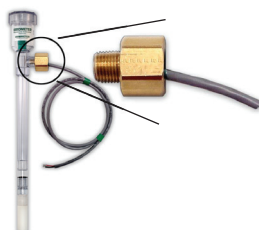
SR DEPTH	CAT #
6" (15 cm)	206
12" (30 cm)	212
18" (45 cm)	218
24" (60 cm)	224
36" (90 cm)	236
48" (120 cm)	248
LT DEPTH	CAT #
6" (15 cm)	506
12" (30 cm)	512
18" (45 cm)	518
24" (60 cm)	524
MLT	CAT #
MINI	MLT

AUTOMATIC SWITCH



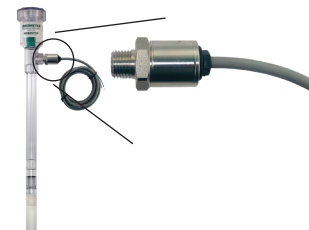
SR DEPTH	CATALOG #
6" (15 cm)	206-AVS
12" (30 cm)	212-AVS
18" (45 cm)	218-AVS
24" (60 cm)	224-AVS
36" (90 cm)	236-AVS
48" (120 cm)	248-AVS
LT DEPTH	CATALOG #
6" (15 cm)	506-AVS
12" (30 cm)	512-AVS
18" (45 cm)	518-AVS
24" (60 cm)	524-AVS
MLT	CATALOG #
MINI	MLT-AVS

VOLTAGE OUTPUT



SR DEPTH	CATALOG #
6" (15 cm)	206-RSU-V
12" (30 cm)	212-RSU-V
18" (45 cm)	218-RSU-V
24" (60 cm)	224-RSU-V
36" (90 cm)	236-RSU-V
48" (120 cm)	248-RSU-V
LT DEPTH	CATALOG #
6" (15 cm)	506-RSU-V
12" (30 cm)	512-RSU-V
18" (45 cm)	518-RSU-V
24" (60 cm)	524-RSU-V
MLT	CATALOG #
MINI	MLT-RSU-V

CURRENT OUTPUT



SR DEPTH	CATALOG #
6" (15 cm)	206-RSU-C
12" (30 cm)	212-RSU-C
18" (45 cm)	218-RSU-C
24" (60 cm)	224-RSU-C
36" (90 cm)	236-RSU-C
48" (120 cm)	248-RSU-C
LT DEPTH	CATALOG #
6" (15 cm)	506-RSU-C
12" (30 cm)	512-RSU-C
18" (45 cm)	518-RSU-C
24" (60 cm)	524-RSU-C
MLT	CATALOG #
MINI	MLT-RSU-C

IMPORTANT NOTICE

Service Unit should be purchased with initial order (see page 2). Only one Service Unit is necessary to service all of your IRROMETERS.

SWITCH OUTPUT provides adjustable automatic vacuum switching capabilities. *See product specification sheet for details.*

RSU-V REMOTE SENSING UNITS are designed to show soil moisture levels by converting the reading to a voltage signal. *See product specification sheet for details.*

RSU-C REMOTE SENSING UNITS are designed to show soil moisture levels by converting the reading to a current signal. *See product specification sheet for details.*

A Test Pump Service Unit (#1002) is recommended for AVS and RSU models.

Please contact us for longer lengths on any IRROMETER. Spanish labels available, add -SP to Catalog #. Options and Accessories on Page 2.

IRROMETER® SERVICE UNITS

A Service Unit is necessary for proper operation of the IRROMETER® instrument and should be included on initial order. One unit will service ALL of your IRROMETERS.



#1001 STANDARD SERVICE UNIT Catalog #1001

Includes:

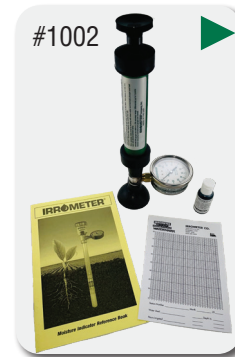
- 1 Hand Vacuum Pump
- 1 Bottle IRROMETER® Fluid
- 25 Monthly Chart Forms
- 1 Reference Book

The **Standard Service Unit** is used during initial installation and then periodically for removal of air from instrument to ensure maximum sensitivity and accuracy. The **Test Pump Service Unit** serves the dual purpose of removing air and testing the gauge in one operation.

For Spanish instructions, add -SP to Catalog #

MLT SERVICE UNIT (not shown) Catalog #1007

Includes: Same items as #1001, except Vacuum Pump is syringe style.



#1002 TEST PUMP SERVICE UNIT Catalog #1002

Includes: Same items as #1001, except Hand Vacuum Pump is equipped with test gauge.

IRROMETER® ACCESSORY ITEMS

CAT # ITEM

1003	Test Pump Adapter
1004	IRROMETER Fluid (0.7 oz. concentrate)
1004-L	IRROMETER Fluid (6 oz. concentrate)
1005	Chart Forms (Monthly/100 Sheets)

IRROMETER® Vacuum Gauges

1008+	SR Gauge only (0-100 cb[kPa])
1008-LT+	LT Gauge only (0-40 cb[kPa])
1008-MLT+	MLT Gauge only (0-40 cb[kPa])

CAT # ITEM

OUTPUT OPTIONS

AVS	Auto Vacuum Switch	Adjustable centibar value
RSU-C+	Remote Sensing Unit	4-20 mA Current Output - (1/4 NPT)
RSU-V	Remote Sensing Unit	Voltage Output - (1/4 NPT)

CAT # ITEM

REPLACEMENT TIPS & COMPONENTS

SRT	SR Replacement Tip
QFSRT	LT Replacement Tip
MLT-TIP	MLT Replacement Tip
CAP	IRROMETER Cap and Stopper Assembly
STOP	Stoppers
SR-O	O-Ring (SR/LT)

IRROMETER® SOIL SOLUTION ACCESS TUBES

Contact us for Soil Solution Access Tubes without suction lines or tubes longer than 48" (120 cm).

SSAT – For easy extraction of soil solution samples when testing salinity levels or plant nutrients in soil water. Includes vinyl suction line with rubber stopper seal and stopcock closure. Requires a vacuum source. (accessories below)



LENGTH	STANDARD TENSION		LENGTH	LOW TENSION	
	Single Line	Double Line		Single Line	Double Line
6" (15 cm)	A6C	A6C-DBL	6" (15 cm)	A6C-LT	A6C-LT-DBL
12" (30 cm)	A12C	A12C-DBL	12" (30 cm)	A12C-LT	A12C-LT-DBL
18" (45 cm)	A18C	A18C-DBL	18" (45 cm)	A18C-LT	A18C-LT-DBL
24" (60 cm)	A24C	A24C-DBL	24" (60 cm)	A24C-LT	A24C-LT-DBL
36" (90 cm)	A36C	A36C-DBL	36" (90 cm)	A36C-LT	A36C-LT-DBL
48" (120 cm)		A48C-DBL	48" (120 cm)		A48C-LT-DBL

ACCESSORIES FOR SOIL SOLUTION ACCESS TUBES

CAT # ITEM

SLA	Suction Line Assembly (to 24")
SLT	Bulk Vinyl Suction Line Tubing
SGL-STOP	Single Hole Stopper
DBL-STOP	Double Hole Stopper

1002-SSAT Vacuum Pump– New stopcock connection. Pump is required to create a sufficient vacuum. For Spanish add -SP. (Contact us for previous version adapter)
SSAT Vacuum Pump

Cat #1002-SSAT



DS-50CC Extraction Syringe is used primarily to extract soil solution from SSAT Tube and can also be used to create a partial vacuum on shorter tubes [12 in. (30 cm) or less]. For SSAT Tubes longer than 12 in. (30cm), use SSAT Vacuum Pump (1002-SSAT).
Extraction Syringe

DC-50CC+



WATERMARK SOIL MOISTURE SENSOR

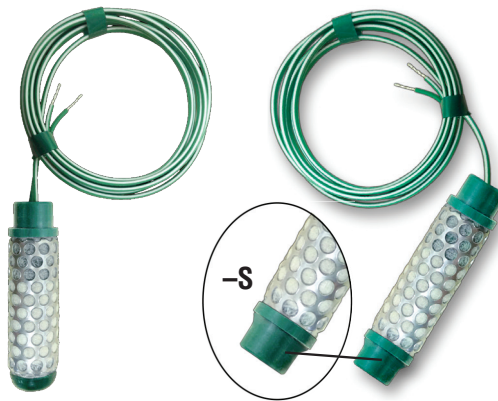
CAT #	CABLE LENGTH
-------	--------------

200SS-5	5' (1.5 m)
200SS-5-S	5' (1.5 m)
200SS-15	15' (4.5 m)
200SS-15-S	15' (4.5 m)
200SS-X	6" (15 cm)

**For lengths longer than 5'— Add per foot.
(minimum applies)**

VTC	Vinyl Caps for pipe assembly (bag of 100)
200SS-VA	Voltage Adapter*
200SS-V-6	6 Channel Voltage Adapter*

*Converts WATERMARK to voltage signal



WATERMARK Soil Moisture Sensor for use with all crops in most soils. To be used with WATERMARK Meter, Monitor, Voltage Adapter, IC-10, or a compatible device. Reads electrical resistance in 0-200 centibar (cb) and kilopascal (kPa) range. Comes standard with half inch stripped and tinned ends. Ships in bulk. Pipe spigot end (-S) allows for installation on pipe, both top and bottom.

Galvanic isolation may be required for some reading devices. See 200SS-V-6.

WATERMARK METER

Solid state, digital hand-held, alternating current resistance bridge meter for reading standard WATERMARK Sensors. Adjustable for soil temperature variations. Touch pad operating panel with LCD display. Includes durable case, 9 volt battery and field replaceable cable assembly.



Only one meter is necessary to read multiple WATERMARK Sensors

CAT #	DESCRIPTION
-------	-------------

30-KTCD-NL	WATERMARK Meter
30-KTCD-NL-SP	WATERMARK Meter
	with Spanish label and instructions
30-KTCD-Cable†	Replacement Cable

WATERMARK MONITOR | WaterGraph software for downloading and graphing data is available free from our website.



The **900M Monitor** is a battery operated data-logger, that automatically reads up to eight sensors. Users can view readings on the screen or download data to a laptop. The 900M Monitor accepts WATERMARK soil moisture sensors, soil and air temperature sensors, switch closure sensors, rain gauge, and IRROMETER RSU-V.

See Monitor Packages for sensor combination options.

A **Cellular Gateway** option can be added to the 900 Monitor to improve productivity by sending data to the IRROcloud data platform and allowing access through any internet connected device. (See page 4)

Cellular Gateway systems include a battery pack and solar panel.

CAT #	DESCRIPTION
-------	-------------

COMPONENTS

900M-0	Monitor Only (without sensors)
--------	--------------------------------------

POPULAR 900M MONITOR PACKAGES:

900M	WATERMARK Monitor
	with seven WATERMARK Sensors, one Soli Temperature Sensor, each with 15' (4.5 m) wire leads.
900M-8	WATERMARK Monitor
	with eight WATERMARK Sensors, each with 15' (4.5 m) wire leads.
900M-1-6-APS	WATERMARK Monitor
	with six WATERMARK Sensors, one Soil Temperature Sensor, each with 15' (4.5 m) wire leads and one Adjustable Pressure Switch (for recording irrigation events).

900M ACCESSORIES

CAT #	DESCRIPTION
-------	-------------

900M-CG/BP LTE ATT	AT&T® Cellular Gateway w/ battery pack & solar panel
900M-CG/BP LTE VRZ	Verizon® Cellular Gateway w/ battery pack & solar panel
900M-RSU-V	RSU Voltage Wiring Board (One per 8 RSUs)
200TS	Soil Temperature Sensor with 15' (4.5 m) wire lead
ATS	Air Temperature Station with 36 in. (91 cm) wire lead
APS	Adjustable Pressure Switch
900RG	Rain Gauge
CDS	Annual Cellular Data Service
	(Most Countries - Call factory for details)

ATS –
Air Temperature Station includes sensor, radiation shield, and mounting bracket



Rain Gauge –
AeroCone® design with mounting base and bird spikes.

IRROcloud SYSTEM

IC-10 SENSOR MONITOR

- 2+Years Battery Life:** Standard “C” Batteries
- Simple Set Up:** No configuration or calibration
- Install Anywhere:** No height or solar requirement
- LTE-M Cellular Direct to Cloud:** No other device needed



IC-10 Sensor Options –

- Watermark
- IRROMETER RSU-V
- Soil Temperature Sensor
- Adjustable Pressure Switch
- Air Temperature Station*
- Rain Gauge*

(*Pictured on page 3)

The IRROcloud Data Platform enables viewing of IRROMETER or WATERMARK sensor data in real-time from any mobile device or computer. The intuitive dashboard provides device status, location maps, a quick reference gauge panel with adjustable thresholds. The full-featured graph and reporting suite supports detailed analysis of soil moisture, rainfall, irrigation events, and text based frost alerting.



IC-10 MONITOR — FCC IC certified

CAT #	ITEM
IC-10	IRROcloud Sensor Monitor (without sensors) reads WATERMARKS. Includes 1 free year of IRROcloud service
IC-10-IR	IRROcloud Sensor Monitor (without sensors) reads RSU-V IRROMETERS. Includes 1 free year of IRROcloud service
IC-10-PRO	IRROcloud Sensor Monitor Includes 6 Watermarks, 1 Soil Temp, 1 Pressure Switch and 1 free year of IRROcloud service

IC-10 SENSOR OPTIONS

CAT #	ITEM
200TS	Soil Temperature Sensor
APS	Adjustable Pressure Switch
ATS	Air Temperature Station
900RG	Rain Gauge - AeroCone® Design with mounting base and bird spikes
ISR	IRROcloud Service Annual Online Renewal

IRROmesh SYSTEM

975 COMPONENTS

CAT #	ITEM
975B	Base Mesh System Base Node, allows multiple "hops" for greater system range, uses combination of Relay and End Nodes.
975NR	Relay Node Capacity for 3 WATERMARK Sensors, 1 Temperature Sensor, 1 Adjustable Pressure Switch and 1 Rain Gauge. Node has 25' (7.6 m) Cable.
975NE	End Node Capacity for 3 WATERMARK Sensors, 1 Temperature Sensor, 1 Adjustable Pressure Switch and 1 Rain Gauge. Node has 25' (7.6 m) Cable.



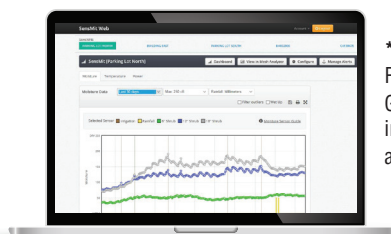
The IRROmesh node accepts WATERMARK sensors, soil and air temperature sensors, switch closure sensors, rain gauge, and IRROMETER RSU-Vs.

DATA COLLECTION DEVICE

CAT #	ITEM
975G-BP	Gateway w/Battery Pack & Solar Panel* Data transfer to Internet via Cellular Modem. (Includes Solar Panel)

ACCESSORIES

CAT #	ITEM
-BC	Bird Cover Factory mounted if added to catalog number with "BC" Example: 975NR-BC.
975-RSU-V	RSU-V Voltage Transducer Adapter



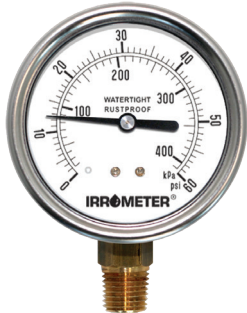
***WEB Based Data Service** – Required for PC Link and Cell Gateway. Displays data online in real time. Per unit charges apply from per month.



IRROMETER® PRESSURE GAUGES



Membrane Vented Pressure Gauge – (7MV series) Membrane vented pressure gauge allows for superior temperature and elevation related compensation while maintaining a dust proof and waterproof environment. Features a stainless steel case, with a durable 2½ in. (63mm) polycarbonate face. Connected with a ¼ in. brass standard pipe thread stem (NPT) and integral snubber. Dual scale P.S.I. and kPa faceplate.



Liquid Filled Pressure Gauge – (7LF series) Glycerin filled for severe service conditions with pulsation and vibration. Features stainless steel case with a durable 2½ in. (63mm) polycarbonate face. Connected with a ¼ in. brass standard pipe thread stem (NPT) and integral snubber. Dual scale P.S.I. and kPa faceplate.

Membrane Vented Pressure Gauge

This item has a 1.6% accuracy rating across the full scale of the gauge, a large 2½ inch face for ease of reading, a stainless steel rustproof body, and a membrane vent for temperature and elevation related compensation.

GAUGE RANGE	MEMBRANE VENT	LIQUID FILLED
psi/kPa	CAT#	CAT#
15 psi / 100 kPa	7MV-15†	N/A
30 psi / 200 kPa	7MV-30†	N/A
60 psi / 400 kPa	7MV-60†	7LF-60†
100 psi / 700 kPa	7MV-100†	7LF-100†
200 psi / 1400 kPa	7MV-200†	7LF-200†
400 psi / 2800 kPa	7MV-400†	7LF-400†

LANDSCAPE AUTOMATION PRODUCTS

The **WATERSWITCH** manages irrigation based on soil moisture status by overriding the irrigation controller operation when the soil becomes wetter than the moisture setting. The **WATERSWITCH** includes a weather resistant control module and one Watermark #200SS-5 sensor. Both AC and DC options available. Packaged for display.

- Nine selectable moisture level settings
- Reads sensor and changes switch accordingly
- Uses a single Watermark sensor
- Status indicator light
- Timed bypass
- CE and UK CA marked



WATERSWITCH SELECTION CHART

CAT#	DESCRIPTION	VALVE CONTROL		
		COMMON INTERRUPT	SENSOR CIRCUIT	
		Single	Groups	ALL
WS-AC	powered by 24 VAC from your controller	✓	✓	✓
WS-DC	powered by its own internal 9 volt battery			✓



Multiple Hydrozone System – the MHS provides soil moisture automation for any conventional 24 VAC irrigation controller. Optional Time Delay Relay needed for pump start systems.

MULTIPLE HYDROZONE SYSTEM PACKAGES

SYSTEM	HYDROZONES	VALVE CAPACITY
MHS-4-16	4	16
MHS-6-32	6	32
MHS-8-48	8	48
MHS-TD	Required for pump start relays	

NOTE: Please contact us to verify compatibility.

IRROMETER®, SSAT OR WATERMARK INSTALLATION TOOLS

Slide Hammer – Steel slide hammer with 7/8” (22 mm) diameter x 48” (120 cm) long insertion tip, calibrated every 12” (30 cm). Top of tool is sliding hammer that drives tip into and back out of the ground, leaving a smooth borehole for sensor insertion.

Cat #1012



Coring Tool Kit – Nickel plated 7/8” (22 mm) soil coring tool. Comes as a kit in fabric storage pouch with two 12” (30 cm) extensions and handle for making up to a 36” (90 cm) access hole. Can also be used for soil sampling.

Cat #1013



Auger Tool Kit – Nickel plated 1” (25 mm) soil auger. Makes oversize hole for grout style sensor installation in hard or rocky soils. Comes as a kit in fabric storage pouch with two 12” (30 cm) extensions and handle for making up to a 36” (90 cm) access hole.

Cat #1014

Extension Rod – 12” (30 cm) extension rod for #1013 or #1014 to make deeper access holes.

Cat #1015

Specialty accessories available for deep installations, contact us for pricing and availability.



WATERMARK Sensor Insertion Tool – Tee handle style tool for inserting a WATERMARK Sensor up to 30” (76 cm) into a borehole created by one of the other tools shown in this section. It has an internal ejection rod inside the tube to push the sensor off of the tool once it's fully inserted into borehole.

Cat #1017

IRROMETER® REPAIR PRICES • IN NORTH AMERICA ONLY •

CAT #	DESCRIPTION
R1	Recondition IRROMETER – R, SR or TG (includes new tip, stopper, complete cleaning and gauge check)
R1-LT	Recondition IRROMETER – LT or MLT (includes new tip, stopper, complete cleaning and gauge check)

CAT #	DESCRIPTION
EXTEND	Extend IRROMETER
RHVP	Recondition Hand Vacuum Pump (plus parts)
TRADE-IN	Trade-In Plan (exchange old for new)
CONVERT	Convert R to SR (replaceable tip)
	(add to recondition cost)

Call **IRROMETER** for a Returned Goods Authorization Number (RGA)
Ship prepaid to: 1425 Palmyrita Avenue, Riverside, CA 92507

WEIGHT AND MEASUREMENT INFORMATION

IRROMETER® NET WEIGHTS

LENGTHS	6 INCH (15 CM)	12 INCH (30 CM)	18 INCH (45 CM)	24 INCH (60 CM)	36 INCH (90 CM)	48 INCH (120 CM)	60 INCH (150 CM)
IRROMETER	.844 lb. / .383 kg	.968 lb. / .439 kg	1.09 lb. / .496 kg	1.22 lb. / .553 kg	1.47 lb. / .666 kg	1.72 lb. / .780 kg	1.97 lb. / .893 kg
SSAT	.176 lb. / .080 kg	.254 lb. / .115 kg	.331 lb. / .150 kg	.408 lb. / .185 kg	.562 lb. / .255 kg	.717 lb. / .325 kg	.871 lb. / .395 kg

CAT #	DESCRIPTION	WEIGHT
200SS	WATERMARK Sensor 5' (1.5 m)157 lb. / .071 kg
30-KTCD-NL	WATERMARK Meter752 lb. / .341 kg
WS-AC and WS-DC	WATERSWITCH7 lb. / .31 kg
900M	WATERMARK Monitor	5.00 lb. / 2.27 kg
975NR or 975NE	IRROmesh Node (Relay or End)	1.53 lb. / .69 kg
975B	IRROmesh Base	1.54 lb. / .70 kg
975G-BP	IRROmesh Cellular Gateway/Battery Pack	11.0 lb. / 4.98 kg
7 Series	Gauge375 lb. / .170 kg
IC-10	IRROcloud Sensor Monitor	2.00 lb / 1.00 kg

CAT #	DESCRIPTION	WEIGHT
1001	Service Unit	1.07 lb. / .484 kg
1002	Test Pump Service Unit	1.44 lb. / .654 kg
1004	IRROMETER Fluid187 lb. / .085 kg
1005	Monthly Chart (100)28 lb. / .128 kg
1012	Slide Hammer	33.00 lb. / 14.97 kg
1013	Coring Tool Kit	3.00 lb. / 1.36 kg
1014	Auger Tool Kit	3.00 lb. / 1.36 kg
1017	WATERMARK Insertion Tool	3.00 lb. / 1.36 kg

All prices F.O.B. Riverside, California, and apply to North America. (U.S. Dollars)

Terms: Cash, VISA, MasterCard with order or C.O.D. Net 30 days with previously established credit. Minimum \$7.50 order charge

Prices and specifications subject to change without notice.

EXPORT PACKING CHARGE: \$0.50 per IRROMETER - \$5.00 minimum per package. (Applies only to shipments outside North America.)

Shipping and Mailing Address:

1425 Palmyrita Avenue
Riverside, California 92507-1600

Phone: (951) 682-9505 Fax: (951) 682-9501

Email: sales@IRROMETER.com

U.S.A. (10/21) #9

